



SUPER TILLER

2.5 TO 1
STRUCTURAL SAFETY FACTOR

UP TO 550 LB
LADDER RATING

100'
WELDED EXTRUDED ALUMINUM LADDER

V-MAX
TILLER CAB

As the innovator of aluminum aerials, E-ONE offers a proven track record in aerial safety with ZERO structural failures or tip-overs in more than 30 years of aerial production.

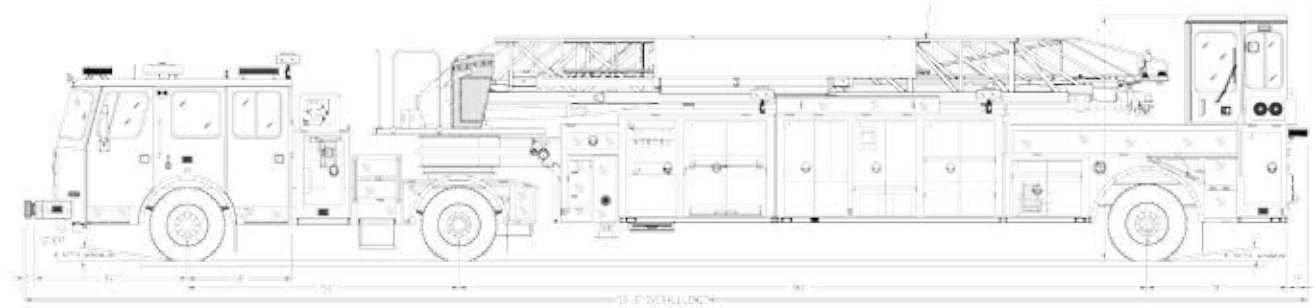


STRENGTH. STABILITY. SAFETY.

The E-ONE Super Tiller with V-Max™ Cab is a 100 ft. tillered aerial ladder boasting a 550-lbs. tip-load at the end while flowing water in all positions. V-Max Cab is designed for optimal visibility and has an enclosed flip up “buddy-seat” for driver training. The tiller cab also features air-conditioning, heat and defrost as standard. The air ride tiller axle and custom-designed steering system are engineered to enhance the tiller’s maneuverability on congested, uneven streets.

The Super Tiller also offers a single set of outriggers with 17’-6” jack spread, standard short jack system for deployment in confined spaces and standard run-under protection system.

SUPER TILLER



CUSTOM CHASSIS

- Cyclone® II or Quest® chassis
- Medium and long 4-door cabs available
- Optional vista
- Air suspension for tiller axle
- 140" tractor wheelbase
- Up to 600 HP Engine
- Standard safety features such as roll cage cab, CrewGuard & ABS brakes
- Airbags optional

AERIAL FEATURES

- 100' extruded aluminum ladder with 2.5 to 1 structural safety factor
- 550 lb tip load (500-lbs. firefighters and 50-lbs. equipment) dry and wet
- Jack spread of only 17' 6" with short jack capability standard
- 11'3" overall height
- No outrigger pins
- Pinnable waterway
- Angled tip for better driver visibility when stowed
- Options include ladder bracket on base and axle and pike pole brackets at tip

BODY CONSTRUCTION

- Extruded aluminum body
- Standard and high capacity body configurations available
- Dual till cab staircases
- Modular body construction
- Standard and wide ladder tunnel options
- Body design meets NFPA requirements for viewing the tiller axle area

ELECTRICAL

- Multiplex electrical system with display provides increased feature capability and improved diagnostics
- Whelen® optical and audible warning packages standard, others optional
- Options include LED scene lights, LED ladder climbing lights and 6-15 kW hydraulic generators



CONTACT US AT **E-ONE.COM**
OR CALL **352-237-1122** FOR A DEALER NEAR YOU.