



INTERFACE PUMPER

The KME Interface Pumper is ultimate cumulation of years of experience and design capability, customized to your department's specific requirements.



OUR VEHICLES CONNECT AND PROTECT
PEOPLE AROUND THE WORLD EVERY DAY.
www.revgroup.com



INTERFACE PUMPER

Built For Your Environment.

KME builds each Interface Unit to meet the specific needs and demands of the end user, because each fire department has particular requirements to accomplish their mission. With that in mind, KME builds the strongest bodies with spring mounts to compensate for your terrain, then offers both, stainless steel water tanks or poly water tanks to fit your preference. KME will design your apparatus to fulfill your wildland or structural fire fighting needs.



FEATURES

- Safety and Reliability Built in to Every Unit
- Designed to Provide the Lowest Center of Gravity
- Fabricated Bodies from Galvanealed Steel, Aluminum and Stainless Steel
- Stainless Steel Water Tanks or Poly Water Tanks Available
- On-Site Tilt Table Testing Available to Verify a Safe Overall Design
- Stationary Pumping, Pump and Roll or Engine Driven Pumps
- All Designs are Fully NFPA Compliant as Required

Capability to meet ICS Type 3 or Type 4 requirements depending on design features.



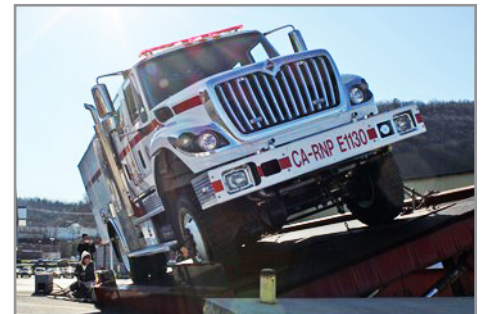
PROVEN PERFORMANCE

KME has hundreds of specialty units in service designed for off road applications for some of the largest wildland response agencies in the country. With units designed to meet your specific agency requirements and custom configurations specific to your department, KME's apparatus performance is proven.



BUILT FOR THE ROAD

KME offers custom designs that combine the equipment storage characteristics of a full Walk-Around body with a Walk-In module area. Combination designs allow for incident command plus full equipment storage.



FLEXIBILITY

With the ability to customize the KME product to your needs, KME will test the completed apparatus to ensure that every unit is the safest design meeting your specifications.

Ver. 5/2019